



FC061

**APT 8 CLAREMONT TOWER ROAD, ST HELIER,  
JERSEY, JE2 3NU**

Asking Price

**£795,000**

**FINE & COUNTRY**  
JERSEY

## Property details

FLYING FREEHOLD - Welcome to Claremont, a beautiful brand new development which sits within the suburb of First Tower, between St Helier's town centre and St Aubin. Being less than half a mile from the beach means strolling or cycling through the four parishes that make up St Aubin's Bay is easy. You can then return home to catch the glorious sunsets over St Aubin's, from the comfort of your own home.

All apartments have been finished to an exceptional standard, and offer 740sq.ft of accommodation including an open-plan lounge/kitchen space, 2 double bedrooms, 2 bathrooms, parking for 2 cars, and either a good size balcony or terrace.

This new development truly is one not to be missed, and viewing is highly recommended.

## Outside

Undercover parking for 2 cars.

5 Visitor spaces and bike racks.

Balcony with views out to St Aubin's Bay.

## Services

All mains and electric heating.

Service charge is £3,570 per annum.

## Directions

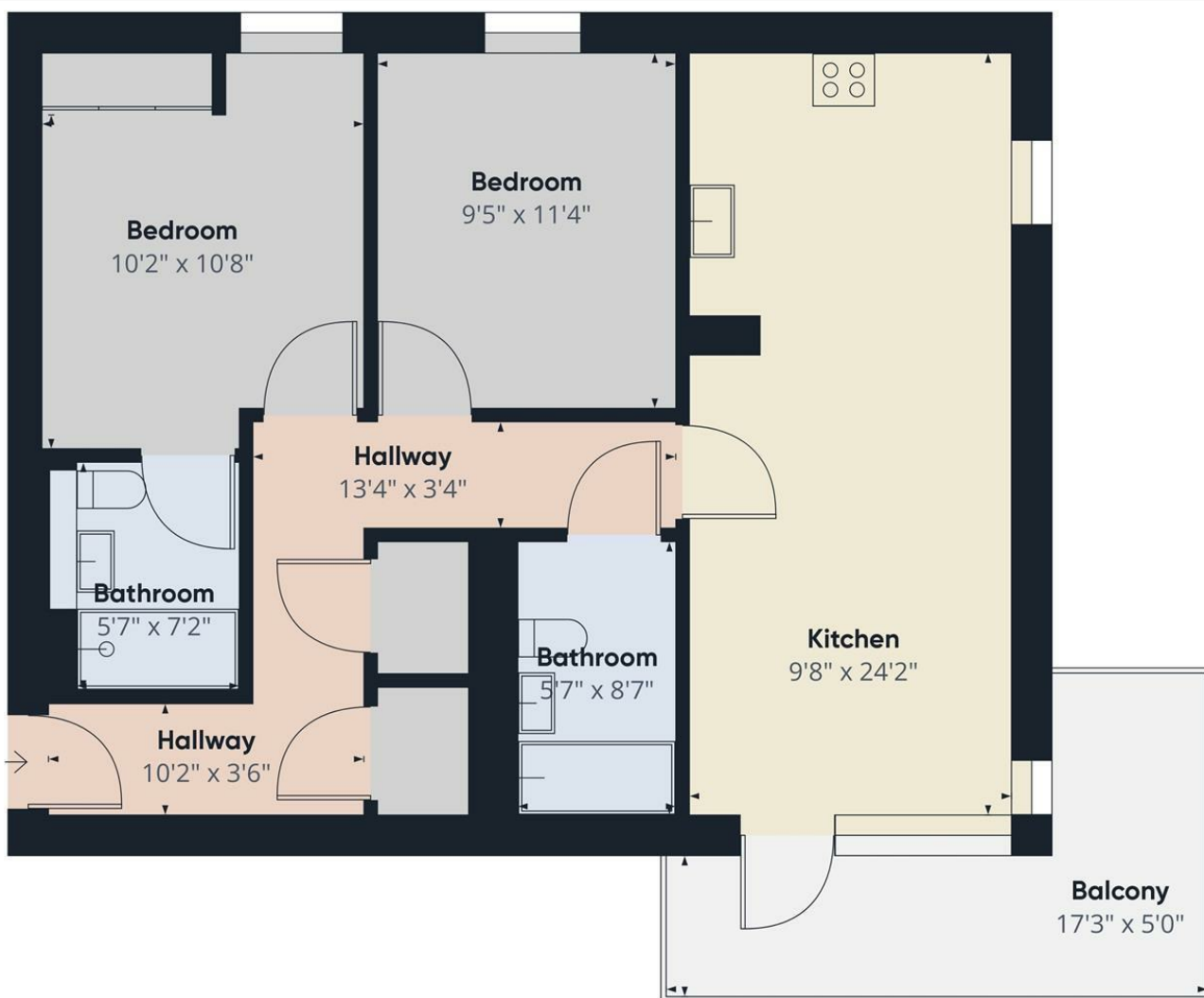
Heading up Tower Road from Bellozanne Road, Claremont Apartments are on the right hand side just after the bend.











**FINE & COUNTRY**  
Jersey

Approximate total area<sup>1)</sup>  
740 sq.ft

(1) Excluding balconies and terraces

While every attempt has been made to ensure accuracy, all measurements are approximate, not to scale. This floor plan is for illustrative purposes only.

GIRAFFE360

Call us on

**01534 888855**

[jersey@fineandcountry.com](mailto:jersey@fineandcountry.com)

[www.fineandcountry.je](http://www.fineandcountry.je)

**5 King Street, St Helier, Jersey, JE2 4WF**

Agents Note: Whilst every care has been taken to prepare these particulars, they are for guidance purposes only. All measurements are approximate and are for general guidance purposes only and whilst every care has been taken to ensure their accuracy, they should not be relied upon and potential buyers are advised to recheck the measurements.

**FINE & COUNTRY**  
JERSEY